

# THE GIFTS MAGAZINE 2025

The largest Middle East collection of sustainable multi-functional and creative corporate gifts and merchandise.

SUSTAINABLE



AWARDS



TECHNOLOGY



DRINKWARE



APPAREL



TRAVEL



ACCESSORIES



BAGS



HEADWEAR



PREMIUM BRANDS



WRITING



OFFICE



**SKROSS**  
ADAPT TO THE WORLD

ocean  
bottle

MOLESKINE®

CHANGE ZERO  
THE CARBON NEUTRAL COLLECTION

SANTHOME

XDDESIGN®

circ  
ular  
& CO.

UMG  
PENS FROM GERMANY

@MEMORII

CHANGE.  
SERIOUS SUSTAINABILITY

Hans Larssen™

# Recycled Polo

## Our Transparent Process

**COLLECTION**  
of plastic bottles,  
removing labels & foreign materials,  
making it process - ready



**COLLECTION**  
of cotton fabric waste,  
also called post-industrial  
cotton waste, making it  
process-ready



**SHREDDING**  
Used water bottles into  
fiber, certified by the  
Global Recycled Standard



**SHREDDING**  
post-industrial cotton waste  
into fiber, certified by the  
Global Recycled Standard



**YARNS**  
produced by spinning the fiber



**YARNS**  
produced by spinning the  
fiber



**FABRIC**  
produced by using cotton &  
plastic yarns together



**APPAREL**  
produced from the Recycled fabric,  
certified by the Global Recycled Standard



**VERIFICATION DOCUMENT**  
available, as the above process is  
entirely transparent

**GREENWASHING DISCOURAGED**  
by using above verifiable process,  
ensuring positive impact on  
environment



**PLEGGED DONATION**  
of 3% of sales proceeds to  
water.org ensures safe water  
& sanitation to the needy



**Plastic Bottles**  
recycled, positive impact



**RECYCLED COTTON**  
ensures fresh cotton is  
not used, positive impact



**WATER SAVINGS**  
as fresh cotton fabric  
production consumes  
huge quantities of water



SANTHOME

**PRO EARTH**  
SHIRT IS MADE FROM  
17 PLASTIC BOTTLES



THIS SHIRT HAS SAVED  
1,260L OF WATER

SANTHOME

**PRO EARTH**  
FULLY RECYCLED POLO

MADE FROM  
60% RECYCLED COTTON  
AND 40% RECYCLED PET







The PRO EARTH Polos from Santhome use

LESS WATER • LESS CHEMICALS • LESS EMISSION • LESS ENERGY • LESS WASTE • REDUCE CARBON FOOTPRINT



Black

White

READY STOCK



**CHANGE.**  
SERIOUS SUSTAINABILITY

THIS SHIRT IS MADE FROM 17 PLASTIC BOTTLES

THIS SHIRT HAS SAVED 1,260L OF WATER

SANTHOME

**PRO EARTH**  
FULLY RECYCLED POLO

MADE FROM 60% RECYCLED COTTON AND 40% RECYCLED PET



**THE GIFT OF WATER**

For each product sold, the brand owner will donate 3% of sales to support Water.org to change lives with safe water and sanitation

White water.org  
a US-based 501(c)(3) global non-profit organization

**785M**

785 million people - 1 in 9 - lack access to safe water

We are supporting Water.org to change this



➤ 3% of sales proceeds of this Polo committed to Water.org by the brand owners

**Item :** PRO Earth Polo - Women's  
**Content :** 40% Recycled PET, 60 % Recycled Cotton  
**Measurement :** Gulf Sizes  
**Sizes Available :** S-XL

**Print Technique :**  
 ① Screen Printing ② Heat Transfer ③ Embroidery  
**Preferred Print Location :** Max Print Size:  
 Left Chest Area / Sleeve 80 x 50 mm



### The PRO EARTH Polos from Santhome use

LESS WATER • LESS CHEMICALS • LESS EMISSION • LESS ENERGY • LESS WASTE • REDUCE CARBON FOOTPRINT



Navy Blue



White



READY STOCK



Black

-1,260L

17

> 3% of sales proceeds of this Polo committed to Water.org by the brand owners

Item : PRO Earth Polo

Content : 40% Recycled PET, 60 % Recycled Cotton

Measurement : Gulf Sizes

Sizes Available : S- XXXL

Care Instructions:

Print Technique :

- ① Screen Printing
- ② Heat Transfer
- ③ Embroidery

Preferred Print Location : Max Print Size:  
 Left Chest Area / Sleeve 80 x 50 mm

PRO EARTH POLO

**CHANGE.**  
 SERIOUS SUSTAINABILITY

THIS SHIRT IS MADE FROM 17 PLASTIC BOTTLES

THIS SHIRT HAS SAVED 1,260L OF WATER

SANTHOME

**PRO EARTH**  
 FULLY RECYCLED POLO

MADE FROM 60% RECYCLED COTTON AND 40% RECYCLED PET

**THE GIFT OF WATER**

For each product sold, the brand owner will donate 3% of sales to support Water.org to change lives with safe water and sanitation

a US-based 501(c)(3) global non-profit organization

**785M**

785 million people - 1 in 9 - lack access to safe water

We are supporting Water.org to change this

# Recycled Polo

# SANTHOME Terra

# Our Transparent Process

## COLLECTION

of plastic bottles, removing labels & foreign materials, making it process - ready



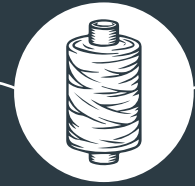
## SHREDDING

Used water bottles into fiber, certified by the Global Recycled Standard



## YARNS

produced by spinning the fiber



## VERIFICATION DOCUMENT

available, as the above process is entirely transparent



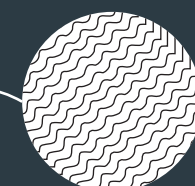
## APPAREL

produced from the Recycled fabric, certified by the Global Recycled Standard



## FABRIC

produced by using cotton & plastic yarns together



## GREENWASHING DISCOURAGED

by using above verifiable process, ensuring positive impact on environment



# CHANGE ZERO

THE CARBON NEUTRAL COLLECTION

Santhome TERRA is a sustainable blend of style and eco-consciousness. Crafted from 100% recycled PET bottles, this polo shirt offers a soft, comfortable fit while helping reduce plastic waste.

## PLASTIC BOTTLES

recycled, positive impact

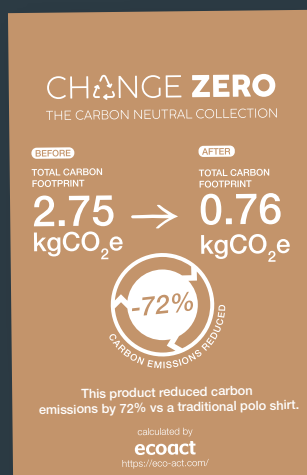
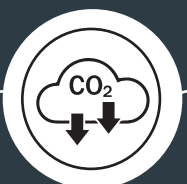


## NO TO LANDFILLS



## REDUCED CARBON FOOTPRINT

due to Recycled Material is also OFFSET



## GARMENT

made without burdening our planet (Our Terra)



## Made from Recycled PET Bottles





SANTHOME

Terra

RECYCLED  
POLO SHIRT

READY STOCK

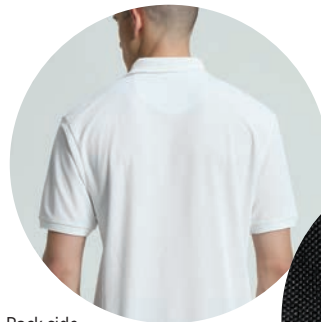
Features *ultra-soft, moisture-wicking material* for exceptional comfort and dryness throughout the day.



Navy Blue



Black



Back side



Coconut Button



Navy Blue



Cobalt Blue

READY STOCK

**A CARBON NEUTRAL PRODUCT**

**CHANGE ZERO**  
THE CARBON NEUTRAL COLLECTION

This polo shirt reduced 72% carbon emission compared to a traditional polo shirt.

The balance 0.76 kgCO<sub>2</sub>e have been offset through ClimatePartner, hence giving it 0.00 kgCO<sub>2</sub>e footprint.



Product with financial  
**climate contribution**

certified by  
**ecoact**  
<https://eco-act.com/>

Item : **TERRA BLACK**    **TERRA WHITE**    **TERRA NAVY BLUE**    **TERRA COBALT BLUE**

Content : 100% Recycled Polyester

Measurment : Gulf    Sizes Available : S, M, L, XL, XXL, XXXL

Print Technique : SC, HT, EMB    Preferred Print Location : Left Chest Area / Sleeve



**READY STOCK**

Inside face has texture to enhance moisture management.  
Outside flat texture facilitates excellent decoration results by printing, embroidery work & feels great.





Colours in Ready Stock\*



Charcoal Grey



White



Maroon



Grey Melange



Black



Royal Blue



Navy Blue



Red

Item : BDNC | Content : Dryncool fabric with UV protection  
Measurement : Gulf | Sizes Available : S, M, L, XL, XXL, 3XL

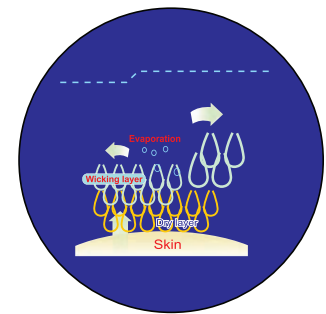
Dryncool is an advanced Moisture Management system (MMS) that helps keep the skin cooler & drier - more comfortable by transporting sweat to outer layer.

Executive wear.

Premium quality.

No-fuss performance.

Creaseless.



Dryncool Mechanism

**READY STOCK**

UV protection fabrics are rated between UPF 25-39. Ultraviolet protection factor(UPF) measures blockage of UV-A and UV-B rays. A UPF rating of 25-39 means that our fabric allows 1/25th to 1/39th (2.56- 4%) of UV radiation that falls on the surface of the fabric to pass through it. Thus, 96-97.4% of UV rays are not allowed to reach your skin thereby protecting the skin from sunburn and long term skin damage.



Tagless label

Print Technique :

- 1 Screen Printing
- 2 Heat Transfer
- 3 Embroidery

Preferred Print Location : Max Print Size:  
Left Chest Area / Sleeve 80 x 50 mm

Care Instructions:



Packing:

52.5x 32.5x 45 cms ; 50 pcs /carton ; gw/nw: 21.5kg / carton  
\* Packing details may have ± 10% variation based on size breakup



Side slits with bartack



Double placket

\* Printing Limitations prevent exact fabric and color representation.  
The shades in the lots may differ due to lot-to-lot variations.  
The difference is no more than internationally accepted norms of the garments trade.

READY STOCK

Light weight, Special Knit fabric,  
with DrynCool & UV Protection Function





(Colours in Ready Stock\*)



UV protection fabrics are rated between UPF 25-39. Ultraviolet protection factor (UPF) measures blockage of UV-A and UV-B rays. A UPF rating of 25-39 means that our fabric allows 1/25th to 1/39th (2.56- 4%) of UV radiation that falls on the surface of the fabric to pass through it. Thus, 96- 97.4% of UV rays are not allowed to reach your skin thereby protecting the skin from sunburn and long term skin damage.



Distinctive Triple Needle Stitch at seams



Tagless high quality label

Item : ADF (ALLDAYFRESH) | Content : Dryncool Sports fabric  
Measurement : Gulf | Sizes Available : S, M, L, XL, XXL, 3XL

Print Technique :

- 1 Screen Printing
- 2 Heat Transfer
- 3 Embroidery

Preferred Print Location : Max Print Size:

Left Chest Area / Sleeve 80 x 50 mm

Care Instructions:



Packing:

51 x 36x 41cm; 50 pcs/carton; gw/nw: 14.2kg/carton  
\* Packing details may have ± 10% variation based on size breakup



Side slits with Bartack



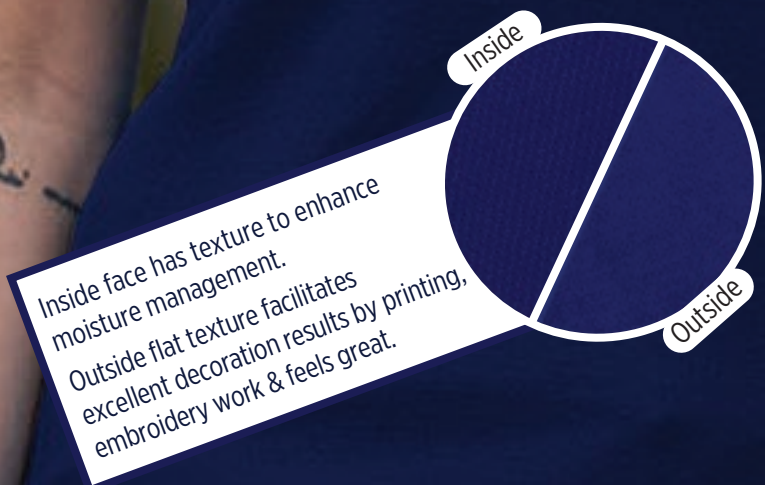
Trendy DTM buttons

\* Printing Limitations prevent exact fabric and color representation. The shades in the lots may differ due to lot-to-lot variations. The difference is no more than internationally accepted norms of the garments trade.

READY STOCK



READY STOCK





Colours in Ready Stock\*



Black



White



Navy Blue



Grey Melange

Item : WBDNC | Content : Dryncool fabric with UV protection  
Measurement : Gulf | Sizes Available : S, M, L, XL, XXL, 3XL

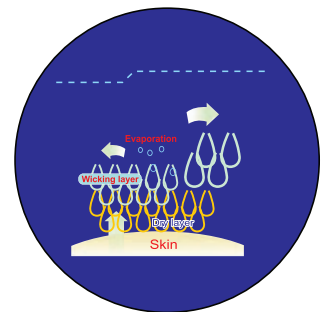
Dryncool is an advanced Moisture Management system (MMS) that helps keep the skin cooler & drier - more comfortable by transporting sweat to outer layer.

Executive wear.

Premium quality.

No-fuss performance.

Creaseless.



Dryncool Mechanism

READY STOCK

UV protection fabrics are rated between UPF 25-39. Ultraviolet protection factor (UPF) measures blockage of UV-A and UV-B rays. A UPF rating of 25-39 means that our fabric allows 1/25th to 1/39th (2.56- 4%) of UV radiation that falls on the surface of the fabric to pass through it. Thus, 96-97.4% of UV rays are not allowed to reach your skin thereby protecting the skin from sunburn and long term skin damage.



Tagless label

Print Technique :

- 1 Screen Printing
- 2 Heat Transfer
- 3 Embroidery

Preferred Print Location : Max Print Size:  
Left Chest Area / Sleeve 80 x 50 mm

Care Instructions:



Packing:

52.5x 32.5x 45 cms ; 50 pcs /carton ; gw/nw: 21.5kg / carton  
\* Packing details may have ± 10% variation based on size breakup



Side slits with bartack



Double placket

\* Printing Limitations prevent exact fabric and color representation.  
The shades in the lots may differ due to lot-to-lot variations.  
The difference is no more than internationally accepted norms of the garments trade.



READY STOCK



Pique Textured cotton rich  
Dryncool performance fabric



# THE GRAND BUCK COLLECTION HIGHLANDER<sup>(i)</sup> POLO SHIRTS FOR ADULTS



## Colours in Ready Stock \*



White cloud  
(White / Light melange)



Terracotta  
(Red/Navy)



Lava  
(Black/Dark melange)



Gulf blue  
(Navy blue/Red)

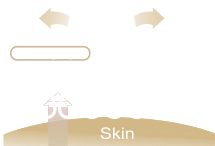


Ebonite  
(Dark melange/Black)



Royal Blue/Black

Item: HIGHLANDER | Content: Cotton rich Dryncool performance fabric  
Measurement: Gulf | Sizes Available: S, M, L, XL, XXL, 3XL



...using special technology this fabric pulls out the moisture away from the skin to the surface of the fabric for quick evaporation, which keeps your body dry and comfortable.

"When you are looking for a performance polo that withstands the daily wash and wear only a HIGHLANDER will meet your expectations.

It has the right feel, fit, weight and the resilience.

This Dryncool material, predominantly composed of cotton, retains its charm - wash after wash"

### Print Technique :

- 1 Screen Print
- 2 Heat Transfer
- 3 Embroidery

Preferred Print Location : Max Print Size:

Left Chest Area / Sleeve

80 x 50 mm

### Care Instructions:



### Packing:



52.5 x 32.5 x 40cm; 50 pcs/carton; gw/nw: 17kg/carton

\* Packing details may have ± 10% variation based on size breakup

\* Printing Limitations prevent exact fabric and color representation.

The shades in the lots may differ due to lot-to-lot variations.

The difference is no more than internationally accepted norms of the garments trade.



Neck tape & inside  
Placket in contrast



Trendy HORN button



Trendy double placket



Contrast side slits with  
bartack detailing

READY STOCK

(i) HIGHLANDER from the THE GRAND BUCK COLLECTION is manufactured with pride under license from SANTHOME HOLDINGS LTD. ( BVI).

# KNITTED POLO SHIRT

SANTHOME

سانتھوم  
SANTHOME  
کومو  
COMO

READY STOCK



Quick-dry fabric and  
Moisture-wicking



Charcoal Grey



Royal Black



Light Grey



READY STOCK



Tagless Label

Item : COMO

Content : 100% Polyester GSM: 170-180

Measurment : Gulf Sizes Available : S, M, L, XL, XXL, XXXL

Print Technique : SC, HT, EMBROIDERY

Preferred Print Location : Left Chest Area / Sleeve

Max Print Size: 80 x 50 mm





White / Grey

Colours in Ready Stock\*



White / Blue



READY STOCK

**Greberry**  
a premium polo

A Concept Bordering between  
FASHION & CORPORATE WEAR!

From the  
**SANTHOME**<sup>®</sup>  
Polos collection

SANTHOME is a registered trademark owned by  
SANTHOME HOLDINGS LTD. (BVI).

- Details : -
- DrynCool fabric
  - UV Protection By Resil
  - Grey Berries for the Design Element
  - Subtle-lined & Berry - infused collar
  - Silicone sleeve tag breaks the monotony
  - The first button thread catches your attention
  - Bottom slit for comfortable postures
  - Frosted Button
  - Regular Fit
- Have we missed anything?

UV protection fabrics are rated between UPF 25-39. Ultraviolet protection factor (UPF) measures blockage of UV-A and UV-B rays. A UPF rating of 25-39 means that our fabric allows 1/25th to 1/39th (2.56- 4%) of UV radiation that falls on the surface of the fabric to pass through it. Thus, **96- 97.4% of UV rays are not allowed to reach your skin** thereby protecting the skin from sunburn and long term skin damage.

Break out from the routine of standard basic designs, & embrace the new Corporate Fashion Polo; Introducing Greberry by **SANTHOME**

The Grey Berries (of Greberry fame) around the shoulder & on the collar infuse the subtle design aspect without being loud.

**Item :** Greberry | **Content :** Dryncool Sports fabric with UV protection  
**Measurement :** Gulf | **Sizes Available :** S, M, L, XL, XXL, 3XL

Print Technique :

- 1 Screen Printing
- 2 Heat Transfer
- 3 Embroidery

Preferred Print Location : Max Print Size:

Left Chest Area / Sleeve

80 x 50 mm

Care Instructions:



Packing:



52.5 x 32.5 x 45 cms ; 50 pcs /carton ; gw/nw: 16kg / carton

\* Packing details may have + 10% variation based on size breakup

\* Printing Limitations prevent exact fabric and color representation.

The shades in the lots may differ due to lot-to-lot variations.

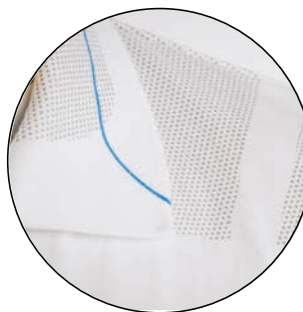
The difference is no more than internationally accepted norms of the garments trade.



Trendy silicon brand tag



Berries on sleeve



Collar design



Frosted top button with contrast color stitch





Colours in Ready Stock\*



Navy - Red / Grey



Grey - Navy / White



White - Red / Navy



Black - Red / Grey



READY STOCK

Item : Tropikana | Content : Dryncool fabric with UV protection  
Measurement : Gulf | Sizes Available : S, M, L, XL, XXL, 3XL

The subtle combinations of corporate colors on sleeves, collar, placket & pocket give a modern, stylish, yet a corporate look to this polo.

UV protection fabrics are rated between UPF 25-39. Ultraviolet protection factor (UPF) measures blockage of UV-A and UV-B rays. A UPF rating of 25-39 means that our fabric allows 1/25th to 1/39th (2.56- 4%) of UV radiation that falls on the surface of the fabric to pass through it. Thus, **96- 97.4% of UV rays are not allowed to reach your skin** thereby protecting the skin from sunburn and long term skin damage.

Print Technique :

- ① Screen Printing
- ② Heat Transfer
- ③ Embroidery

Preferred Print Location :

Left Chest Area / Sleeve

Max Print Size:

80 x 50 mm

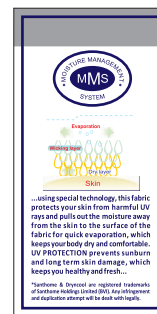
Care Instructions:



Packing:



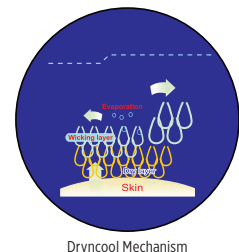
52.5 x 32.5x 45 cm ; 50 pcs /carton ; gw/nw: 16kg / carton  
\* Packing details may have ± 10% variation based on size breakup



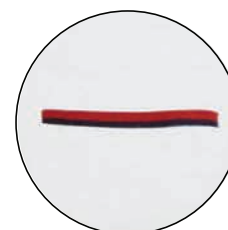
Dryncool is an advanced Moisture Management system (MMS) that helps keep the skin cooler & drier—more comfortable by transporting sweat to outer layer. Executive wear. Premium quality. No-fuss performance. Creaseless.



Tagless Label



Dryncool Mechanism



Patchless concealed pocket



Side slits with bartack

\* Printing Limitations prevent exact fabric and color representation. The shades in the lots may differ due to lot-to-lot variations. The difference is no more than internationally accepted norms of the garment trade.



# SHIELD POLO WITH HEIQ SWISS TECH ANTIMICROBIAL TECHNOLOGY

# الدرع SHIELD

HEIQ SWISS  
TECHNOLOGY

VIROBLOCK  
ANTIVIRAL  
PROTECTION



White



Black



Navy

READY STOCK

Item: Shield | Content: 100% Polyester  
Measurement: Gulf | Sizes Available: S, M, L, XL, XXL, 3XL

### VIROBLOCK ANTI VIRAL PROTECTION

- Executive wear.
- Premium quality.
- No-fuss performance.
- Creaseless.

### Print Technique:

- 1 Screen Printing
- 2 Heat Transfer
- 3 Embroidery

### Preferred Print Location: Max Print Size:

Left Chest Area / Sleeve 80 x 50 mm

### Care Instructions:



### Packing:



51 x 36 x 41cm ; 50 pcs /carton ; gw/nw: 14/12kg / carton  
\* Packing details may have ± 10% variation based on size breakup

Constructed from intelligently designed antimicrobial fabric, this wicking polo shirt SHIELDS against viruses and bacteria that use fabrics as hosting surfaces.

HEIQ Viroblock product is EU BPR and US FIFRA compliant

\*Santhome & DrynCool are registered trademarks of Santhome Holdings Limited (SHV). Any infringement or duplication attempt will be dealt with legally.

\*This article does not claim to prevent infectious diseases, or make any public health claims

مصنوع من قماش مهندس للميكروبات مخصص بذلك، تم تصميمه لجلب أفضل أداء للوقاية من الفيروسات والبكتيريا التي تستخدم الألياف كسطح للتواجد.

منح هذه القمصان بولوك متوافق مع قانون منتجات المبيدات الحيوية للاتحاد الأوروبي ، ومع القانون الاتحادي للمبيدات الحشرية ، ومبيدات الفطريات، ومبيدات الفواض في الولايات المتحدة.

\*شانتوم و دراين كول هي العلامات التجارية المسجلة لشركة سانتوم هولدينجز المحدودة (SHV). أي انتهاك أو محاولة لتقليد سيتم التعامل مع أي محاولة قانونياً.

لا تدعى هذه الملابس أو تتبنى أي مزاد من نقل بالصدفة للعدوى

الدرع  
SHIELD

by  
SANTHOME

من  
سانت هوم

تكنولوجيا  
HEIQ  
VIROBLOCK  
ANTIVIRAL PROTECTION

ANTIVIRAL ANTIBACTERIAL

تحتجز الفيرس والبكتيريا داخل مسامير القماش  
The silver ions are trapped in the textile matrix.

عند ارتداء القمصان أو الفيروسات ، فإنها تموت فوراً على القماش ولا يمكنها التكاثر.  
When bacteria or viruses are present, they are unable to replicate and therefore die.

لا توجد حاجة للغسل ، القمصان يحتجز البكتيريا والفيروسات داخل مسامير القماش ، وبالتالي ، القماش يظل نظيفاً وجافاً.  
Without the presence of bacteria, the textile will remain clean and fresh.



Tagless label

\* Printing Limitations prevent exact fabric and color representation.  
The shades in the lots may differ due to lot-to-lot variations.  
The difference is no more than internationally accepted norms of the garments trade.





Navy Blue



Special textured  
2-tone knit fabric

Dark Grey



White



- Swing+ Tech swing support mechanism
- Enhanced stretch for better range of motion
- UV protection against harmful UV sunlight
- Moisture wicking DryNCool® fabric
- Lightweight fabric

READY STOCK

\* تحتوي الشعة الشمس على الأشعة فوق البنفسجية الضارة ، و التي تسبب في حروق الشمس و حتمت بالاشتراك مع هذا القمصان الخاص من بولو يتم استخدام تكنولوجيا تعمل على منع حروق الشمس، الأضرار المؤلمة التي تحدث للشرة حتى تتمكن من الاستمتاع بالشمس في أمان.

\* يستفيد تقنية (نظام معالجة الرطوبة) ، بولو هذا السجج بطرق الرطوبة بعيداً عن البشرة التي يملح السجج حيث يتغير سريعاً مما يحافظ على جفاف و راحة جسك.

بأنك هذا السجج المصنوع بتقنية نظام معالجة الرطوبة في تصاميم مميزة و يعمل بطريقة ممتازة على التهوره بالسجج مما يجعله أكثر راح.




**سانتهوم** و ادراي اند كويل هي علامات تجارية مسجلة لـ **سانتهوم** القابضة المحدودة (جزء من سانثوم هولدينغز) سوف يتم التعامل بطريقة قانونية مع أي انتهاك أو محاولة لتقليد.

\* Sun rays contain harmful UV rays which cause sunburn and damage to skin. This special polo uses a technology that prevents sunburn, long term skin damage and you can enjoy sun safely.

\* Using MMS (Moisture Management System) technology, this fabric pulls out the moisture away from the skin to the surface of the fabric for quick evaporation, which keeps your body dry and comfortable.

This PERFORMANCE fabric with MMS in the special Knit Design works as excellent Ventilation for free breathing of fabrics, making it more comfortable.




\*Santhome & Dryncool are registered trademarks of Santhome Holding Limited (BVI). Any infringement and duplication attempt will be dealt with legally.

Item : SNP  
Content : 100% polyester, Special Knit  
Measurement : Gulf Sizes Available : S, M, L, XL, XXL, 3XL  
Print Technique :  
① Screen Printing ② Heat Transfer ③ Embroidery  
Preferred Print Location : Left Chest Area / Sleeve  
Max Print Size: 80 x 50 mm



FOR **GOLF** CAPS  
PLEASE REFER PAGES

320, 321, 322, 323, 324, 325, 326



# GOLF POLOS LIMITED EDITION

Colours in Ready Stock\*



Two tone all weather fabric



Anthra



Purple Toned Burgundy

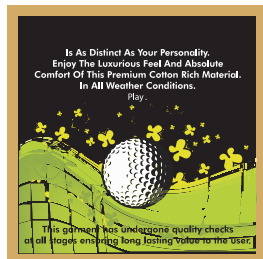


Beige



Sky Blue

READY STOCK



Premium Golf Polo in pre-dyed yarn. Quality comparable to top brands. Collar is high quality jacquard in yarn dyed. Collar band and Placket in biased contrast stripes matching to body.

Item : Golf Polo Limited Edition | Content : Pre-Dyed Two Tone, all-weather fabric. Measurement: Gulf | Sizes Available : S, M, L, XL, XXL, XXXL

Print Technique :

- 1 Screen Printing 2 Heat Transfer 3 Embroidery

Preferred Print Location : Max Print Size: Left Chest Area / Sleeve 80 x 50 mm

Care Instructions:



Packing:

56x 36x 36cms ; 50 pcs /carton ; gw/nw: 15.30kg / carton \* Packing details may have + 10% variation based on size breakup

\* Printing Limitations prevent exact fabric and color representation. The shades in the lots may differ due to lot-to-lot variations. The difference is no more than internationally accepted norms of the garment trade.



High quality pre - dyed Jacquard collar in matching body color



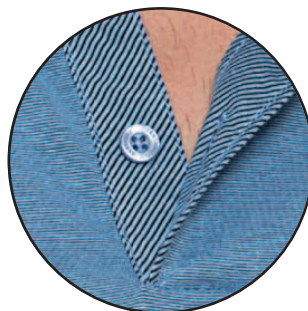
Matching biased placket and edge piping



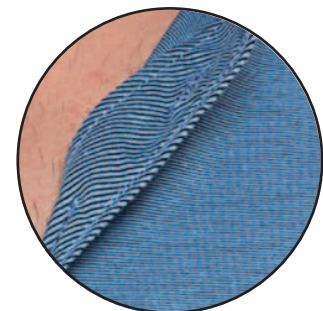
Matching collar band



Freedom sleeves, no cuffs



Embossed buttons



Thick needle stitch at end-of-placket

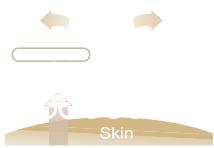




Blue

Light-weight Special texture fabric with MMS Technology

Item : Carribean | Content : 100% Polyester  
Measurement : Gulf | Sizes Available : XS , S , M , L , XL , XXL , 3XL



...using special technology this fabric pulls out the moisture away from the skin to the surface of the fabric for quick evaporation, which keeps your body dry and comfortable.

### Print Technique :

- 1 Screen Printing
- 2 Heat Transfer
- 3 Embroidery


### Preferred Print Location : Max Print Size:

Left Chest Area / Sleeve      80 x 50 mm

### Care Instructions:



### Packing:

 51 x 36 x 41 cm; 50 pcs/carton; gw/nw: 14.2kg/carton  
\* Packing details may have ± 10% variation based on size breakup

\* Printing Limitations prevent exact fabric and color representation.  
The shades in the lots may differ due to lot-to-lot variations.  
The difference is no more than internationally accepted norms of the garments trade.

### Colours in Ready Stock



Black



White



Medium Blue



Grey



Red



Navy



Contrast Tripple Needle Stitch



Trendy Short Collar



Trendy Embossed Button



Tagless label

READY STOCK



# GIORDANO EASY CARE SHIRTS



Regular Fit

Antibacterial

This item has been treated with antibacterial properties, helping it stay fresh against common bacteria, such as Golden Staph, E. Coli and Candida Albicans.

Easy iron

100% Cotton Oxford Fabric

It offers superior hand feel.

Button Down Collar, with patch pocket at chest

Shirt designed as formal with comfort anytime & anywhere

Wrinkle Free treated to avoid crinkles and keeps it fresh

Mechanical stretch imparted on fabric to suit the body

READY STOCK

100% COTTON



White



Blue



Grey







White



Blue



READY STOCK



- ▶ LA wrinkle-resistant finish
- ▶ Itch-free label edges
- ▶ Anti-Crease, DP Rating 3
- ▶ Scottish Classic Oxford weave
- ▶ Top-tier long staple cotton
- ▶ Special tape ensures pucker-free seams & placket
- ▶ Recycled Polybag Packing

Item : SANTHOME OXFORD SHIRT

Content : 100% Cotton

Measurment : Gulf Sizes Available :

**SANTHOME** Oxford Shirt is made for daily comfort. The fabric is cotton with Oxford weave, treated for anti-crease (DP Rating 3). The box pleat in the back assists comfort in hand movement. Tailored to perfection this shirt is a delight to wear.

Print Technique : SC, HT, EMBROIDERY

Preferred Print Location : Above Pocket

Max Print Size: 80 x 50 mm



White



Grey

100% Cotton long sleeve shirt with DuPont Teflon fabric protector. Breathable, Durable, Safe, Gentle fabric with Oil repellance & Stain resistance by *Tonino Lamborghini*

Print Technique : SC, HT, EMBROIDERY Preferred Print Location : Left Chest Area / Sleeve Max Print Size: 80 x 50 mm

Packing Details : 56.5 x 34x 42.5 cm ; 50 pcs /carton ; gw/nw: 19.2kg / carton Size: XS - XL

\* Packing details may have ± 10% variation based on size breakup

READY STOCK



Cream



Black



Navy Blue

Polo Shirts- 100% cotton short sleeve by *Tonino Lamborghini*

Print Technique : SC, HT, EMBROIDERY Preferred Print Location : Left Chest Area / Sleeve Max Print Size: 80 x 50 mm

Packing Details : 48 x 33x 42.5 cm ; 40 pcs /carton ; gw/nw: 16.4kg / carton Size: M, L, XL

\* Packing details may have ± 10% variation based on size breakup





**SUBLIMATION**

Supports Full Color Sublimation Printing

Light weight, Special Knit fabric, with DrynCool Function

Item : ADS (ALLDAYSPORTS) | Content : Dryncool Sports fabric  
Measurement : Gulf | Sizes Available : S, M, L, XL, XXL, 3XL

Print Technique :

- ① Screen Printing      ② Heat Transfer      ③ Embroidery
- ④ Sublimation

Preferred Print Location :      Max Print Size:  
Left Chest Area / Sleeve                      80 x 50 mm

Care Instructions:



READY STOCK



Item : SALAMA | Content : 100% Polyester  
Measurement : Gulf | Sizes Available : S, M, L, XL, XXL, 3XL

Print Technique :

- ① Screen Printing      ② Heat Transfer      ③ Embroidery

Preferred Print Location :      Max Print Size:  
Left Chest Area / Sleeve                      80 x 50 mm

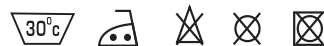
Packing:



\* Packing details may have ± 10% variation based on size breakup

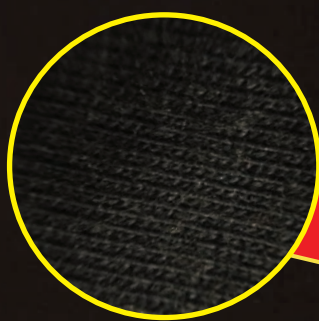


Care Instructions:



\* Printing Limitations prevent exact fabric and color representation.  
The shades in the lots may differ due to lot-to-lot variations.  
The difference is no more than internationally accepted norms of the garments trade.

READY STOCK



Premium Cotton fabric with super hand feel and smoothness





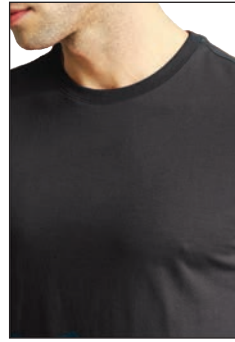
### Colours in Ready Stock\*



White



Petrol



Black



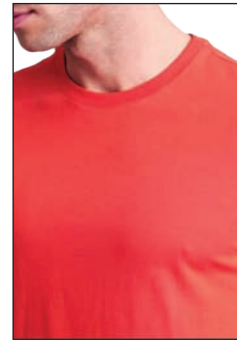
Orange



Navy Blue



Ash melange



Red

Item : BIO 180 | GSM : 180 | Content : 100% cotton. Super combed with Bio - Enzyme | Measurement : Gulf | Sizes : S, M, L, XL, XXL, 3XL

This Premium cotton T shirt uses high quality LONG STAPLE cotton from Central India.

This ensures superior consistency of the yarn it is spun from. Resultant fabric knitted shows the rich handfeel and luxury of COTTON we love. BIO process adds further to the smooth and soft luxury one would never want to come out of...!

#### Print Technique :

- 1 Screen Printing
- 2 Heat Transfer
- 3 Embroidery

Preferred Print Location : Max Print Size:  
Left Chest Area / Sleeve 80 x 50 mm

#### Care Instructions:



#### Packing:

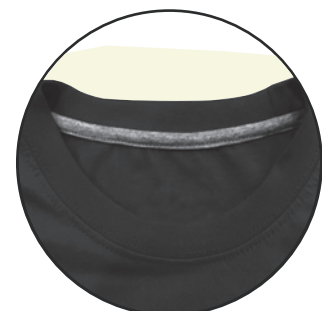


52x 32.5x 50 cm ; 100 pcs /carton ; gw/nw: 21.5kg / carton  
\* Packing details may have ± 10% variation based on size breakup

\* Printing Limitations prevent exact fabric and color representation. The shades in the lots may differ due to lot-to-lot variations. The difference is no more than internationally accepted norms of the garment trade.



Tagless main label



Contrast neck tape

READY STOCK

CORE365

by

SANTHOME



READY STOCK



# CORE365 ROUND NECK T-SHIRTS



Black



White



Red



Airforce Blue



Sky Blue

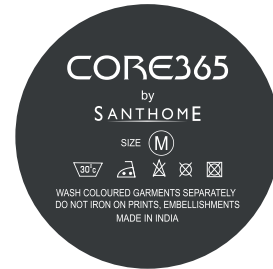


Jungle Green



Charcoal Grey

READY STOCK



Tagless Label

Item : CORE365 | GSM : 160 | Content : Blended Cotton.  
Measurement : Gulf Sizes Available : S, M, L, XL, XXL, 3XL

Feel the comfort with CORE365 - soft, blended cotton fabric t-shirt with a modern stretch classic fit. Maintains shape on washing

### Print Technique :

1 Screen Printing 2 Heat Transfer 3 Embroidery

Preferred Print Location : Left Chest Area / Sleeve

Max Print Size: 80 x 50 mm

### Care Instructions:



CORE365 is a premium soft, blended cotton fabrication t-shirt with a modern stretch fit. Feels soft on the body, maintains shape on washing, genuine stretch fitted and tag-free

**CLASSIC CREW**  
Perfect for layering

**GENUINE FIT**  
Moves freely with you

**TAG FREE**  
Prevents irritation

**CORE365**  
by  
SANTHOME

كور 365 تي شيرت كطني فاخر ، مصنوع من نسيج القطن الطبيعي الممزوج بتصميم عصري ، ناعمة على الجسم ، لا تنكمش عند الغسيل وتحفظ بنفس الشكل ، تحتوي على نسيج مطاط اصلي وبدون رقعة.

تي شيرت برقعة دائرية كلاسيك مثالية عند اللبس تحت القمصان

نسيج اصلي مريح تسمح بحرية الحركة

بدون رقعة لا تسبب الحساسية

**كور 365**  
من  
سانتوم

**LIGHTWEIGHT  
REVERSIBLE  
BOMBER JACKET**

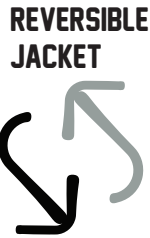
**SANTHOME**



**READY STOCK**



WEAR BOTH WAYS  
IN & OUT



Black/Grey

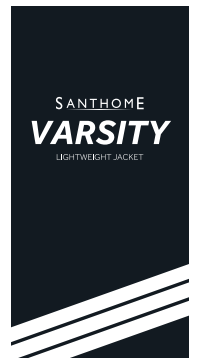


Black/Grey

READY STOCK



Reverse side color (Grey)



Item : M-VARSITY: Black/Grey W-VARSITY: Black/Grey

Content : 100% Lightweight Polyester

Measurment : Gulf Sizes Available : (Men's) S, M, L, XL, XXL, XXXL, (Women's) S, M, L, XL

Print Technique : HT

Preferred Print Location : Left Chest Area / Sleeve

Max Print Size: 80 x 50 mm





READY STOCK



Tagless Label

Item : MARSHALL

Content : 100% Polyester GSM: 270 - 280

Measurment : Gulf Sizes Available : XS, S, M, L, XL, XXL, XXXL

Print Technique : SC, HT, EMBROIDERY

Preferred Print Location : Left Chest Area / Sleeve

Max Print Size: 80 x 50 mm



Balck



Grey

READY STOCK



Tagless Label

Item : CREW

Content : 100% Polyester Fleece GSM: 260

Measurment : Gulf Sizes Available : S, M, L, XL, XXL, XXXL

Print Technique : SC, HT, EMBROIDERY

Preferred Print Location : Left Chest Area / Sleeve

Max Print Size: 80 x 50 mm





READY STOCK



- > Black vest from 100% recycled polyester
- > 100% RPET padding
- > Regular fit
- > Zipped side pockets
- > Wind protection layer

Item : SANTHOME Zip Up Puffer Vest

Content : RPET / Polyester

Measurment : Gulf Sizes Available : S, M, L, XL, XXL, XXXL

SANTHOME Santhome Regular Puffer Vest is made of 100% recycled polyester (Black is recycled) with zipped side pockets and wind protection. Crafted in a monochrome design, the vest is a regular fit with padded body. This is a perfect winter must-have.

Print Technique : SC, EMBROIDERY

Preferred Print Location : (Front Left) (Back Centre)

Max Print Size: (Front Left) 80 x 30 mm (Back Centre) 200 x 40 mm





without zipper



with zipper



READY STOCK

**Item:** SANTHOME ARTIK collection – Hoodies

**Content:** Cotton rich Soft single fleece.

**Measurement:** Gulf | **Sizes Available :** S, M, L, XL, XXL, XXXL

SANTHOME ARTIK Collection Hoodie Sweatshirts are made from high quality fleece. The inside is brushed which keeps you warm. The outer is plain and smooth. Contrasting Trims add to the elegance. Kangaroo pockets that keep your hands cozy. These hoodies are a perfect outdoor must have!

Print Technique : SC, HT, EMBROIDERY Preferred Print Location : (Zipper) Front Pocket Max Print Size: 80 x 50 mm



# SANTHOME



- > 100% Acrylic
- > Cashmere Like
- > Sweater for winter, autumn & spring

### SANTHOME SWEATER

Print Technique: Embroidery

Max Print Size: 80 x 50 mm

Preferred Print Location: Left Chest Area

Size: M - XXL

\* Printing Limitations prevent exact fabric and color representation.  
 The shades in the lots may differ due to lot-to-lot variations.  
 The difference is not more than internationally accepted norms of the garments trade.  
 \* Packing details may have ±10% variation based on size breakup

READY STOCK

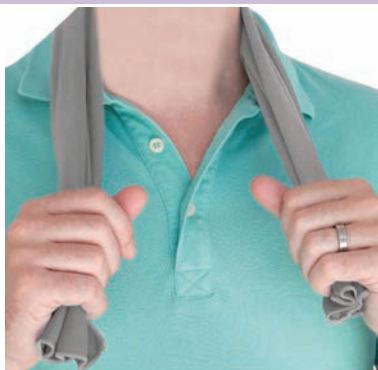


Giftology

### CTGL 7120 - COOLING TOWEL

Giftology RPET Microfiber Cooling towel in RPET Pouch. Add some cold water on towel to create a cooling effect for fast refreshment.

Print Technique: UV, SC, EMBROIDERY Pouch Size : 11.5 x 16.5 cm



- > 100% Free Of Chemicals
- > UV Protection
- > Fast Cooling When Needed
- > Packed in convenient carry bottle with Carabiner



Giftology



### CTGL 7119 - COOLING TOWEL

Giftology Microfibre cooling towel 100% free of chemicals. 98% sun blocking function up to UV 50+ protection. The towel can be easily used by adding some cold water to the bottle creating a cool towel for fast refreshment. The bottle is made out of PP with ABS top and carabiner to take along on outdoor activities. Registered design®

Print Technique: UV, SC, EMBROIDERY Preferred Print Location: Bottle Max Print Size: 190 x 45cm

Product Size: 17.5 x 7 x 6 cm (Bottle) Packing Details: 74 x 40 x 40cm; 100 pcs/ cartoon; gw/nw: 15/14 kgs cartoon



**SANTHOMÉ**  
HEADWEAR **ULTRA**



**STRUCTURED FITTED**

Designed with a structured build that retains its form and has a crown that is slightly elevated.



**100% RECYCLED POLYESTER**

An eco-friendly cap that is made of 100% recycled polyester.



**CURVED VISOR**

This cap is designed to keep a proper curved shape at all times.



**ADJUSTABLE BUCKLE**

Adjustable back closure strap made of high quality metal buckle to ensure great fit for any size.



Royal Blue



Fabric is a high quality breathable polyester with our advanced moisture management system (Dry N Cool).



Look for the Santhome rivet inside on genuine Santhome caps only

READY STOCK



Black



Navy Blue



White



ULTRA

HWSN 516 - Black HWSN 517 - White HWSN 518 - Navy Blue HWSN 4010 - Royal Blue

**SANTHOMÉ** Ultra is a structured-fitted 6-panel RPET cap - made from 100% recycled polyester, and containing our proprietary DryN Cool moisture management tech. Wear it the way you like with an adjustable metal buckle and curved visor. A great sustainable, yet stylish and sporty cap!

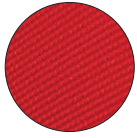
Print Technique : HT, SC, EMBROIDERY

Preferred Print Location : Front

Max Print Size : 45 x 35 mm

Product Size : 27 X 19 X 12 cm





**OTTOMAN KNIT FABRIC**

Made of ottoman knit fabric - a heavy, plain, textured fabric with horizontal ribbing.



**STRUCTURED FITTED**

Designed with a structured build that retains its form and has a crown that is slightly elevated.



**CURVED VISOR**

This cap is designed to keep a proper curved shape at all times.

**SANTHOME**  
HEADWEAR

**TITAN**



**SILENT VELCRO CLOSURE**

Uses a unique **silent velcro** closure system that also guarantees an excellent fit for all sizes.



**97% RECYCLED POLYESTER**

An eco-friendly cap that is made of 97% recycled polyester and 3% spandex. Spandex (for stretch) enables a great head fit



Look for the Santhome rivet inside on genuine Santhome caps only

READY STOCK



White



Black



Navy Blue



Red



Royal Blue



Grey



Silent Velcro



**TITAN**

**HWSN 501** - White **HWSN 502** - Black **HWSN 503** - Navy Blue **HWSN 504** - Red **HWSN 505** - Royal Blue **HWSN 506** - Dark Grey

**SANTHOME** Titan is a structured six-panel cap in 97% recycled polyester and 3% spandex with adjustable velcro and curved visor. A stylish addition to your everyday look now available in 6 colors.

Print Technique : HT, SC, EMBROIDERY

Preferred Print Location : Front

Max Print Size : 45 x 35 mm

Product Size : 27.5 X 19 X 12 cm



SANTHOME HEADWEAR

FLEX



UNSTRUCTURED FITTED

Designed with an unstructured build that offers major comfort and a relaxed, casual vibe to your look.



CURVED VISOR

This cap is designed to keep a proper curved shape at all times.



ADJUSTABLE BUCKLE

Adjustable back closure strap made of high quality metal buckle to ensure great fit for any size.



60% RECYCLED COTTON 40% RECYCLED POLYESTER

An eco-friendly cap that is made of 60% recycled cotton and 40% recycled polyester.



Look for the Santhome rivet inside on genuine Santhome caps only

READY STOCK



Sky Blue



Beige



Navy Blue



FLEX

HWSN 513 - Sky Blue HWSN 514 - Beige HWSN 515 - Navy Blue

SANTHOME Flex is an unstructured six-panel cotton rich cap in 60% recycled cotton and 40% recycled polyester. Perfectly suits the outdoor, casual vibe with adjustable metal buckle and curved visor. Available in 3 colors.

Print Technique : EMBROIDERY Preferred Print Location : Front Product Size : 27 X 19 X 12 cm

Max Print Size : 45 x 35 mm



SANTHOME  
HEADWEAR

SWIFT



SILENT VELCRO CLOSURE

Uses a unique **silent velcro** closure system that also guarantees an excellent fit for all sizes.



STRUCTURED FITTED

Designed with a structured build that retains its form and has a crown that is slightly elevated.



CURVED VISOR

This cap is designed to keep a proper curved shape at all times.



DOUBLE MESH BACK PANEL

Trucker cap made with 100% polyester double mesh back panel for extra air and breathability.



Look for the Santhome rivet inside on genuine Santhome caps only

READY STOCK



Black



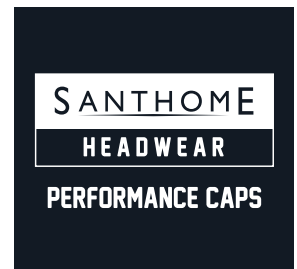
Navy Blue



White



Double Mesh Cut on the Back allows good ventilation



SWIFT

HWSN 507 - Black HWSN 508 - White HWSN 509 - Navy Blue

**SANTHOME** Swift is a structured six-panel trucker cap with double mesh on back side for allowing extra air in and heat out. Designed with an innovative silent Velcro strap design that takes the screeching sound out of normal velcro straps and feels much more premium. Material: 35% cotton, 65% polyester

Print Technique : HT, EMBROIDERY

Preferred Print Location : Front

Max Print Size : 45 x 35 mm

Product Size: 26 X 19 X 12 cm





# DELTA



## MOISTURE WICKING

This cap will keep your head feeling sweat-free and comfortable even when you sweat a lot.



## STRETCH FITTED

This cap offers a sleek, custom fit with flexible fabric that molds to your head for all-day comfort.



## CURVED VISOR

This cap is designed to keep a proper curved shape at all times.



Look for the Santhome rivet inside on genuine Santhome caps only

READY STOCK



White



Navy Blue



Green



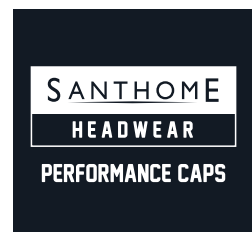
Grey



Black



Marine Blue



DELTA

HWSN 4002 - White HWSN 4003 - Navy Blue HWSN 4004 - Green HWSN 4005 - Grey HWSN 4006 - Black HWSN 4007 - Marine Blue

**SANTHOMÉ** The Santhome Delta Cap is an innovative performance cap made of lightweight athletic fabric, stretch-fitted elastic sweatband and our proprietary DryNCool® moisture-wicking technology. Delta is an all-rounder - suitable for indoor or outdoor use, sports, travel, gym or adventure. Made of 95% polyester with 5% spandex for stretch-fit. One size fits all.

Print Technique : EMBROIDERY Preferred Print Location : Front  
Product Size: 27 X 19 X 12 cm

Max Print Size : 45 x 35 mm



SANTHOME  
HEADWEAR

ACE



ADJUSTABLE BUCKLE

Adjustable back closure strap made of high quality metal buckle to ensure great fit for any size.



STRUCTURED FITTED

Designed with a structured build that retains its form and has a crown that is slightly elevated.



CURVED VISOR

This cap is designed to keep a proper curved shape at all times.



HIGH TECH LASER CUT

A lightweight, performance polyester cap with laser cut design for maximum ventilation.



Look for the Santhome rivet inside on genuine Santhome caps only

READY STOCK



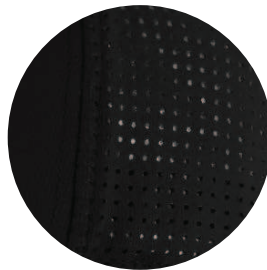
Black



White



Navy Blue



High Tech Laser Cut on the Side and Back allows good ventilation



ACE

HWSN 510 - Black HWSN 511 - White HWSN 512 - Navy Blue

SANTHOME Ace is a structured-fitted five-panel cap with DryN Cool proprietary moisture management, adjustable metal buckle and curved visor. Fine lasered holes on side and back add ventilation and keep you cool and comfortable in the sun, or while playing sports. Classy and sporty design!

Print Technique : HT, EMBROIDERY

Preferred Print Location : Front

Max Print Size : 60 x 35 mm

Product Size: 27 X 19 X 13 cm



# APEX



### LIGHTWEIGHT

This cap provides effortless comfort and sun protection with a breathable, airy design.



### CURVED VISOR

This cap is designed to keep a proper curved shape at all times.



### MOISTURE WICKING

This cap will keep your head feeling sweat-free and comfortable even when you sweat a lot.



Black



White



READY STOCK

APEX

HWSN 4008 - Black HWSN 4009 - White

**SANTHOMÉ** Santhome Apex is a performance visor made from lightweight athletic fabric with our proprietary DryNCool® moisture-wicking technology. Adjustable velcro. Made from 95% polyester and 5% spandex.

Print Technique : EMBROIDERY

Preferred Print Location : Front

Max Print Size : 45 x 35 mm

Product Size : 27 X 19 X 12 cm

## SANTHOMÉ

### SANTHOMÉ Deluxe pique mesh spandex fitted cap

White/White sandwich



One Size Fits All

Excellent Shape Retention Even After Multiple Uses

Contrast Color Sandwich On Front

Fabric With Pores For Air Ventilation



Red/Black sandwich



SC 105

Santhome Nu-Fit® Performance Caps are a premium quality 6-panel constructed pique mesh spandex fitted cap, utilizing the patented Stretch-Fitting technology from Nu-Fit®. Stretch fitting by Nu-Fit® has excellent shape retention even after multiple uses and one size fits all. The pique mesh knit provides air ventilation, and spandex provides sweat absorption. Contains contrast sandwich. Santhome Nu-Fit® Performance Caps are an excellent premium cap / sports cap / outdoors / baseball cap.

Print Technique : HT, Embroidery Preferred Print Location : Front / Back Max Print Size : 45 x 35 mm

Packing Details : 62x 36 x 56 cms ; 150 pcs /carton ; gw/nw: 16.5 kg / carton





# HEAVY BRUSHED COTTON CAPS

## SANTHOME



Red



Black



White



Royal Blue



Navy Blue



Green

- > Heavy Brushed Cotton Twill Cap
- > 5-panel promotional cap - good logo space in front
- > All colors matched to Santhome BDNC Polo
- > Adjustable metal buckle

NARVA

HWSN 523 - Black HWSN 524 - White HWSN 525 - Navy Blue HWSN 526 - Royal Blue HWSN 527 - Red HWSN 528 - Green

**SANTHOME** Complete your look with this structured five-panel heavy brushed cotton promotional cap in 100% cotton twill with adjustable metal buckle and curved visor.

Print Technique : SC, HT, EMBROIDERY

Preferred Print Location : Front

Max Print Size : 60 x 35 mm

READY STOCK

## SANTHOME

- > Heavy Brushed Cotton Twill Cap
- > 6-panel promotional cap
- > Adjustable metal buckle



White



Black

TARTU

HWSN 521 - Black HWSN 522 - White

**SANTHOME** Complete your look with this structured six-panel heavy brushed cotton promotional cap in 100% cotton twill with adjustable metal buckle and curved visor.

Print Technique : SC, HT, EMBROIDERY

Preferred Print Location : Front

Max Print Size : 45 x 35 mm

*Hans Larsen™*



White with Black sandwich



Maroon

100% HEAVY BRUSHED COTTON  
HANSLARSEN CAP WITH  
METAL BUCKLE

Print Technique : HT, SC, EMBROIDERY



**LIGHTWEIGHT & VERSATILE**

Offers versatile comfort & ease, making it perfect for any activity.



**100% COTTON**

Has a refined look, combining relaxed with sophisticated style.



**REVERSIBLE HAT**



**SUN PROTECTION**

Shield your face from harmful UV rays while keeping you stylishly cool.



**HWSN 4001 - TRAIL**

**SANTHOME** Trail is a canvas bucket hat with a reversible design, making it easy to switch your look by flipping it inside out. Made of soft, yet durable cotton twill with a relaxed, bucket-style silhouette, Trail is a comfortable companion for all your adventures.

Print Technique : SC, HT, EMB

Product Size: ø58 cm

READY STOCK



**HWSN 7117 - SANTHOME PANAMA HAT**

**SANTHOME** High quality wide-brimmed panama hat / straw hat with black ribbon. Adjustable from the inside, with outer band and comfortable inner band. One size fits all

Print Technique : SC, HT

Product Size: ø59 cm



# FACE MASKS

XDDESIGN®



Layers



Filter

- Designer Masks From XDDESIGN, Holland
- VIRALOFF® Technology for Protection
- Built for 1,000 Hours of Usage

TALSI

HWXD 171 - Black    HWXD 173 - Navy Blue

**XDDESIGN** This comfortable XD DESIGN face mask is made for every face. Lightweight three-layer design; The polyester front layer is treated with ViralOff®, a technology that removes 99% of the viruses in 2 hours. The middle layer contains a unique laboratory tested Hyproof® Nanofibre filter. This filter has a filtering efficiency of 95%. The inner layer is made of polyester. With three-dimensional chin structure and nose bridge for easy breathing. This set includes: 1 reusable and washable face mask, 5 reusable filters, 1 storage pouch. This device is not a medical device within the meaning of Regulation EU / 2017/745 (surgical masks) nor is it personal protective equipment within the meaning of Regulation EU / 2016/425 (filter masks type FFP2). Registered design®

Print Technique : SC , HT      Preferred Print Location : Right Side      Max Print Size : 60 X 40 mm  
 Product Size : 18 x 2 x 13.5 cm      Packing Details : 62 x 40 x 32 cm ; 180 pcs / carton ; gw / nw : 13 kg / carton

READY STOCK

## REUSABLE NON-MEDICAL FACE MASK

50X

REUSABLE & MACHINE WASHABLE WITH GUARANTEE OVER 99% ANTIBACTERIAL RATE

100%

ECO-FRIENDLY COTTON

> 95%

BACTERIAL FILTRATION EFFICIENCY (BFE) FOR PARTICLES > 3 MICRO METER



ADJUSTABLE EARLOOPS ONE SIZE FITS ALL

Eco Friendly Cotton



Grey/Black Kids



Navy Blue/Grey Kids

MARONI

HWSN 192 K - Grey/Black - Kids    HWSN 193 K - Navy Blue/Grey - Kids

**SANTHOME PROTECT** Reusable face mask with 6 layer triple filtration system. The comfortable design with adjustable nose clip, soft elastic ear loops and soft materials that prevent heat built-up ensures this mask can be used for a long time. Certified Bacterial Filtration Efficiency and Particulate Filtration efficiency of over 95% (>3 micron). Reusable upto 30 washes.

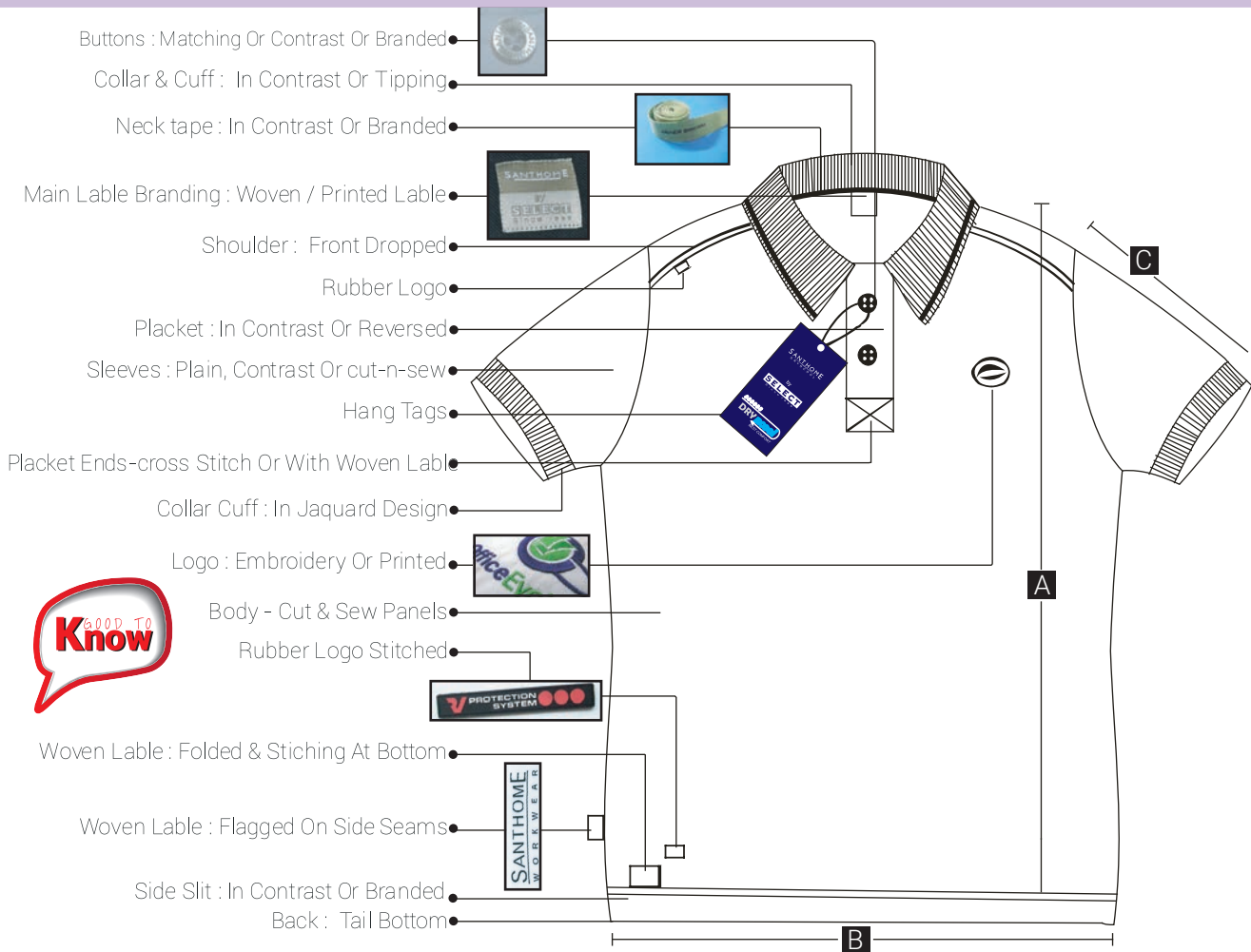
Print T: SC, HT    PPrint Location: Side      Max Print Size: (Medium) 40 X 50 mm (Kids)  
 Product Size : Medium 20 X 13 cm / Kids  
 Packing Details: 63.5 x 56 x 33 cm ; 500 pcs / carton ; gw / nw : 15.22 kg / carton

MCMS 105 - REPS

**SANTHOME PROTECT** Reusable Non-Medical 2 layer cotton face mask that is treated with Silvadur TM (A DuPont product) antibacterial agent. Comfortable daily use masks that protect you and do not harm the environment!

Print T : SC , HT    PPrint Location : Right Side      Max Print Size : 60 X 40 mm  
 Packing Details: 57 x 40 x 20 cm ; 600 pcs / carton ; gw / nw : 9.20 kg / carton





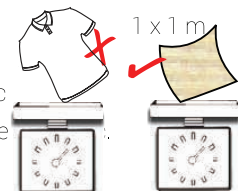
**Typical measurements:-**

	Gulf/Asian Sizes			Europe Sizes		
	M	L	XL	M	L	XL
A	28	29	30	29	30	31
B	21	22	23	22	23	24
C	8	8.5	9	8.5	9	9.5

These measurements are for guidelines only. The actual measurements may vary slightly between garments as knit garments have internationally accepted higher tolerance values

**GSM or GMS ?**

Most manufacturers confuse clients with this. GSM: Grammes per sq. meter is the wt. of the fabric in a square of 1 meter x 1 meter.it remains the same in all sizes. Hence the correct way to describe GMS: is the wt. in grammes per piece of the Tee/Polo And will always vary with each size. Thus, completely misleading. We ALWAYS specify the GSM. So you are rest assured of what we offer.



**Heavier the better ?**

Not necessarily. The quality of yarn will decide the quality and Price. Super combed, combed, semi combed and carded: this is the quality of YARN in descending order. We specify the yarn. So you are rest assured of what we offer.

**What more we can offer:**

You Are Welcome To Send Your Design Ideas And Originals. We Will Reproduce It For You..!



# CUSTOMIZED TRENDY WEAR



Sapil

Sublimation Print



Bapco

Single Jersey 100% cotton 180gsm round neck t-shirt



Overall Print



Single color gradation print

CUSTOM MADE



BELAND



VECCHIA



INBICTA

Various Trendy styles can be created with decoration by print and embroidery. Your special design can be created as per demand.

Fabric suggestions : 100 % Cotton, Polymesh, Dryncool, ADF etc.

Pantone matching items can be produced against MOQ requirements.

The brands & images used are for representation purpose only & belong to their respective brand owners.



**SANTHOME**  
WORKWEAR



SANTHOME WORKWEAR are customized for workshops and showrooms as smart outfits meeting exacting standards of quality and performance. # Kameron has provision for knee pads for extra protection at work. 100% cotton or polycot fabric will meet client requirements of comfort and utility.

CUSTOM MADE



Formal shirts and trousers in various colours, fabric qualities. Designs can be made customized to the need of the industry. Shirts come in plains and oxfords. Trousers come in PV, PC and cotton.



HILTON CARGO PANT

BEWEAR Shirt in 100% cotton twill has excellent resilience to everyday wash and wear. Two patch pockets with button through flaps on front and a pen slot on sleeves. Ideal for driver and Security uniforms Co-ordinated HILTON cargo Pants in 100% cotton Chinos are a smart uniform for staff.



KORAM

KORAM Messenger Uniforms Set: Polycot Multipanel shirt with black Polycot trousers. Smart uniforms that will also deliver our identity!

The brands & images used are for representation purpose only & belong to their respective brand owners.





CUSTOMIZED ACTIVE WEAR

CUSTOMIZED WINTER WEAR

CUSTOM MADE



WROCLAW



BUKINI

Bukini using stretch material



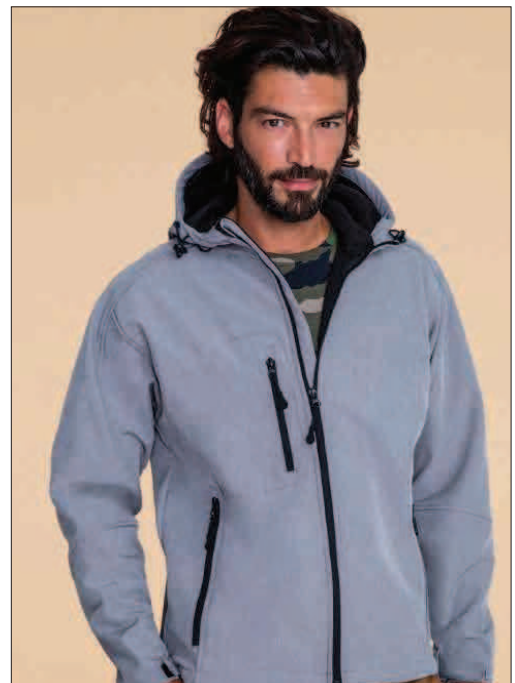
Brocky Jacket in Tetron



WAIHI- BLACK



MILTON



100% cotton twill reporter jacket with various pockets for multiple use.

Amazing trendy sportswear of high quality can be produced using ADF, Polymesh or special materials. Branding by special quality printing is also possible against MOQ requirements.



CUSTOMIZED SCHOOL UNIFORMS



CUSTOM MADE

CUSTOMIZED SAFETY / MEDICAL & HOSPITALITY UNIFORMS



The brands & images used are for representation purpose only & belong to their respective brand owners.



# MAKE FULLY CUSTOMIZED CAPS



Choose among our premium retail quality headwear selection.

- ▶ **Minimum:**  
144 units only
- ▶ **Sample Delivery:**  
2-3 weeks
- ▶ **Bulk Order:**  
8 weeks by air  
12-15 weeks by sea
- ▶ **Choose among 40 color options:**





**STYLES**



**CLOSURE**



**PEAK/BRIM**



**SPECIAL BRANDING**

